



ReaddleDocs 2

User's guide

© 2008-2010 Readdle Inc.

Contents

Introduction.....	3
Copying files to ReaddleDocs	3
USB file transfer using iTunes File Sharing	3
Opening files from other apps (iOS4 only)	3
Transferring files via browser	3
Connecting ReaddleDocs as a shared network drive.....	3
Windows XP	4
Windows Vista/ Windows 7	5
Mac OS X	5
Access files stored online	6
Using Readdle Storage to copy files from your computer to iPhone or iPod Touch.....	6
Copying files from MobileMe iDisk to iPhone/iPod Touch	7
Copying files from DAV supported web storage to iPhone/iPod Touch	7
Downloading files from the Internet via built-in web-browser	7
Saving files from Mobile Safari	8
Accessing device photos folder	8
Saving attachments to ReaddleDocs via Readdle Storage.....	9
Configuring ReaddleDocs to save attachments	9
Transferring mail attachments into ReaddleDocs	9
Viewing and managing documents with ReaddleDocs	9
Reading documents on the go.....	9
Uploading documents from ReaddleDocs to iDisk or other storage	12
Opening documents in other apps	12
List of supported file formats	13
Settings	13

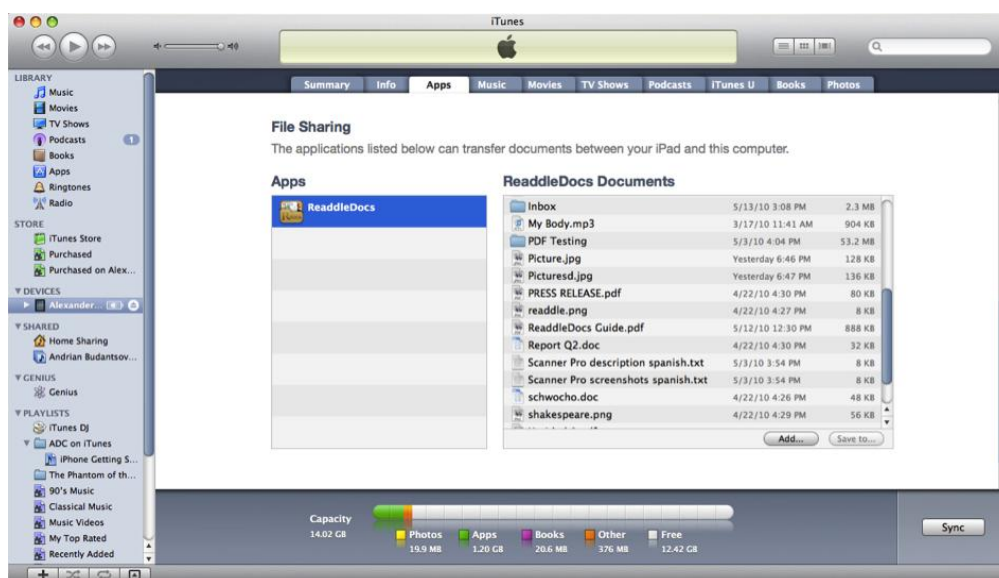
Introduction

ReaddleDocs is an advanced documents reader for your iPhone and iPod Touch. Besides opening any documents, it allows you to use your iPhone and iPod Touch as a flash drive from any Windows or Mac computers.

Copying files to ReaddleDocs

USB file transfer using iTunes File Sharing

ReaddleDocs supports iTunes USB File Sharing. To transfer files, connect the iPhone/iPod Touch to computer via USB, open iTunes and click on device name in the left column. Afterwards, click on the Apps tab and scroll it to the very bottom.



You can Drag & Drop files into ReaddleDocs document list or click **Add** button to use file selection dialog.

Opening files from other apps (iOS4 only)

ReaddleDocs can open files from other apps that supports iOS4 "Open In..." functionality. For instance, to transfer attachment from your Mail app, open the email, tap and hold on the attachment and choose ReaddleDocs in the "Open In..." option. File will be copied to ReaddleDocs and opened instantly.

Transferring files via browser

You can transfer files to and from ReaddleDocs via web browser. Once your iPhone/iPod Touch and a computer are in the same WiFi network, open the browser on the computer and type in full ReaddleDocs URL into the address bar: <http://192.168.1.16>. Replace 192.168.1.16 with the IP address of your iPhone/iPod Touch. You can see correct IP address on the Network Tab inside ReaddleDocs.

Connecting ReaddleDocs as a shared network drive

ReaddleDocs relies on a Wi-Fi network connection of any type to copy files between iPhone/iPod Touch and a computer.

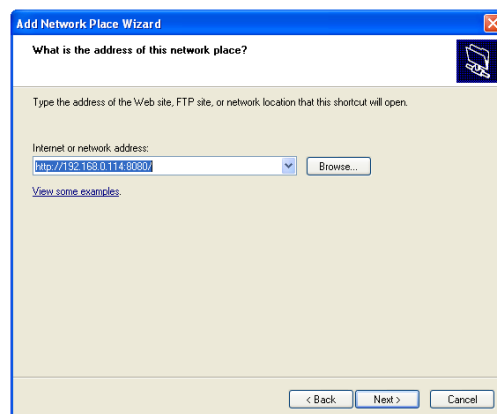
ReaddleDocs uses WebDAV protocol to share its data with other computers via Wi-Fi Network. Most popular operating systems and many programs have the ability to mount WebDAV resource as a network drive.

You need to know device IP address as login and password to access your device. Login and password are optional and can be configured on the "Settings" tab inside ReaddleDocs.

You may also connect to ReaddleDocs with any modern web browser. Just type full URL like **http://192.168.1.16** into address bar (replace 192.168.1.16 with IP address of your iPhone/iPod Touch).

Windows XP

- 1 Open the **Start** menu and select **My Network Places**.
- 2 At the **Network Tasks** panel (you can find it on the left part of the window) click **Add a Network Place**. **Network Place Wizard** will be launched.
- 3 Click **"Next"** at the **Add Network Place Wizard** welcome screen.
- 4 Select **"Choose another network location"** and then click **"Next"**.
- 5 Type "http://" and ReaddleDocs IP address and port. This information is displayed on top of the **"Network"** tab on your iPhone/iPod Touch.
- 6 Enter the name for this new connection or leave a default one.
- 7 Press **Finish**. Please ensure that "Open this network place when I click Finish" is checked.



If you enabled password protection inside ReaddleDocs, you will be prompted to enter your username and password. Make sure you are entering username and password which are set in ReaddleDocs **"Settings"** tab. Also, please note that Windows XP may ask you to enter the password several times.

- 8 As a result you should get ReaddleDocs network drive mounted and ready to use:

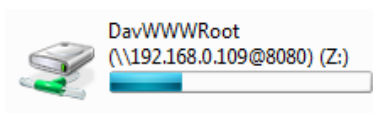
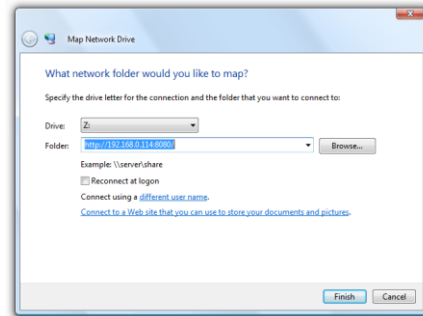


My iPhone (192.168.0.109)

To reconnect to ReaddleDocs in the future, first make sure that ReaddleDocs is running. Open the **Start** menu and click **"My Network Places"**. Find the network drive under Network Locations and double-click it.

Windows Vista/ Windows 7

- 1 Open the **Start** menu and select **Computer**
- 2 Click **Map network drive** at the toolbar on top of the **Computer** window.
- 3 Choose a drive letter in the drop-down menu.
- 4 Type "http://" and ReaddleDocs IP address. This information is displayed on top of the **"Network"** tab inside ReaddleDocs. Make sure the "Reconnect at login" box is unchecked.
- 5 If you enabled password protection inside ReaddleDocs, you will be prompted to enter your username and password. Make sure you are entering username and password which are set in ReaddleDocs **"Settings"** tab. Also, please note that Windows Vista/Windows 7 may ask you to enter the password several times.
- 6 As a result you should get ReaddleDocs network drive mounted and ready to use:



To reconnect to ReaddleDocs in the future, first make sure that ReaddleDocs is running. Open the **Start** menu and click **Computer**. Find the network drive under Network Locations and double-click it.

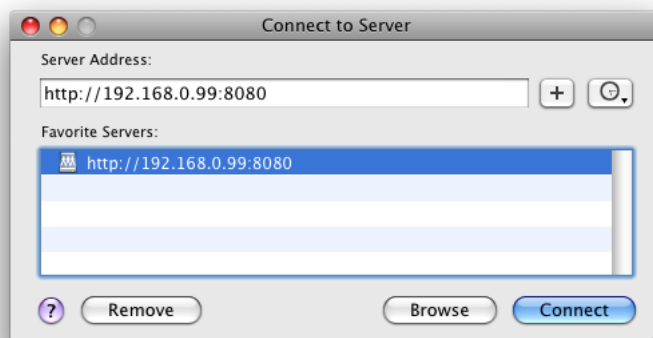
Enabling or changing your username and password for ReaddleDocs:

- 1 Open the Start menu and select Computer.
- 2 Find the ReaddleDocs network drive under Network Locations.
- 3 Right click on the ReaddleDocs network drive and select Disconnect.
- 4 Set up the drive again as described above.

Mac OS X

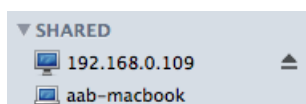
- 1 Click on the Finder icon
- 2 Select the "Connect to Server..." item in the Go menu. You can use ⌘K shortcut as well.
- 3 Type "http://" and ReaddleDocs server's IP address. This information is displayed on the **"Network"** tab inside ReaddleDocs.

- 4 Press "Connect" button. You can also add the server to "Favorite Servers" list.



If you enabled password protection at ReaddleDocs, you will be prompted to enter your username and password. Make sure that you are entering username and password which are set in ReaddleDocs "Settings" tab.

- 5 As a result you should get Shared Disk mounted on your Mac:



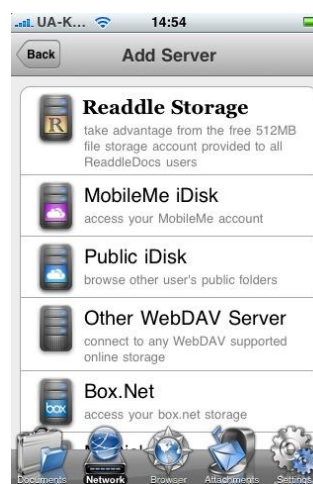
You can also enable "Connected servers" setting at Finder Preferences→General to show it on the Desktop.

Access files stored online

Using Readdle Storage to copy files from your computer to iPhone or iPod Touch

Readdle Storage is great when you don't have Wi-Fi connection but need to upload some files from any computer to your device. To upload files, follow these steps:

- 1 As a ReaddleDocs buyer, you are eligible to get free lifetime Readdle Storage account at http://storage.readdle.com/create_account. Just choose the plan called "Free" when registering. This account will be used to store your documents securely.
- 2 After creating the account, go to Network tab inside ReaddleDocs, tap Add button, then tap Readdle Storage label and enter your login and password for Readdle Storage account. ReaddleDocs will catch your account and become able to get files stored online.
- 3 To upload files online, use any modern web browser on your computer. Navigate to <http://readdle.com> and log into Readdle Storage. You will see uploading interface, which is fast and easy to use.

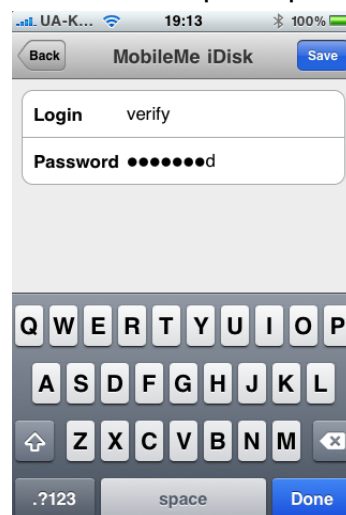


- 4 After you uploaded your files online, they become accessible via Network tab inside ReaddleDocs. Tapping on any of them will save the file locally to the device and open it for reading.

Copying files from MobileMe iDisk to iPhone/iPod Touch

For people who use MobileMe iDisk to store their files online, ReaddleDocs provides quick and handy access to the documents directly from their devices. Also, you can use iDisk to transfer files from the desktop computer or laptop to the iPhone.

- 1 After creating the MobileMe account, go to Network tab inside ReaddleDocs, tap MobileMe iDisk label and provide the application with your login and password for MobileMe account. ReaddleDocs will catch your account and become able to get files that you store online.
- 2 After you uploaded your files online, they become accessible via Network tab inside ReaddleDocs. Tapping on any of them will save the file locally to the device and opens it for reading.



Copying files from DAV supported web storage to iPhone/iPod Touch

If you use popular web storage services to make documents available from anywhere, ReaddleDocs provides handy access to your files directly from the iPhone and iPod Touch.

- 1 Go to Network tab inside ReaddleDocs, tap **Add - Other WebDAV Server** label and provide the application with your login, password, and your service WebDAV URL. For instance, Box.Net users will need to type `http://www.box.net/dav`
- 2 Once you added online storages, they become accessible via Network tab inside ReaddleDocs. Tapping on any of them will show the content stored online. To save the file locally to the device, tap its name.

Downloading files from the Internet via built-in web-browser

You can use built-in web browser to find and save files from the Web directly to your device.

- 1 Open **Browser** tab to start browsing the web
- 2 Browse the web until you navigate to the file you want to save on your device.
- 3 Press **Save** button on the toolbar.
- 4 Enter file name, choose destination folder and tap **Done** button.



5 Give ReaddleDocs a time to download a file.

NOTE 1: In case the website uses cookie-based authorization, you can visit it with built-in browser. Just enter your login and password and download a file.

NOTE 2: If the site uses HTTP-based authorization (usually displays browser dialog for entering username and password), you'll need to enter into the built-in browser special URL like:

```
http://username:password@site.com
```

where username - is your username, password - is your password, site.com - is the url of the site. Note the colon between username and password. It may seem to be a bit complicated (require typing URL with username and password), but it is the only option for ReaddleDocs now, due to limitations of Apple software components.

NOTE 3: On Pressing the Home button, ReaddleDocs running on iOS4 platform will continue transfers in the background. In case background transfer isn't complete within 10 minutes, it will be cancelled.

Saving files from Mobile Safari

You can also use MobileSafari to browse the web and ReaddleDocs to quickly save documents that you have found there.

To save file, change first part of URL in the address bar from "http://" to "rhttp://" (or "rhttp://username:password@" in case web site uses HTTP-based authorization), and press **Go**. ReaddleDocs will launch and try to download requested file.

NOTE: On Pressing the Home button, ReaddleDocs running on iOS4 platform will continue transfers in the background. In case background transfer isn't complete within 10 minutes, it will be cancelled.

Accessing device photos folder

ReaddleDocs allows user to access photos on your iPhone/iPod Touch. This way you will be able to open images transferred to your device via standard iTunes sync, as well as photos taken directly from iPhone camera.

Saving attachments to ReaddleDocs via Readdle Storage

ReaddleDocs relies on Readdle Storage web service to transfer attachments to your iPhone/iPod Touch.

Configuring ReaddleDocs to save attachments

- 1 Sign up for the “Free” plan on Readdle Storage. You can do this at http://storage.readdle.com/create_account . You will receive an email with account login, password and mail-in email address.
- 2 Go to **Network** tab, tap **Add – Readdle Storage**. Enter your Readdle Storage login and password, then tap **Done**.

NOTE: To change these settings, tap **Edit** and then your Readdle Storage account label.

Transferring mail attachments into ReaddleDocs

- 1 Forward the email with attachment to mail-in address for your Readdle Storage account. Your email will be processed within several minutes. ReaddleDocs creates “**Readdle Mail In**” contact in your Address Book, so you do not need to type your mail-in address.
- 2 Navigate to Readdle Storage via Network tab.
- 3 Tap the file you need to save. ReaddleDocs will download and open file.

NOTE: Downloaded file can be accessed later even without active Internet connection

Viewing and managing documents with ReaddleDocs

After you have transferred PDF or other documents to your iPhone, there are several possible scenarios of what you can do with your documents:

- Read documents on the go
- Manage files stored inside ReaddleDocs
- Email files directly from ReaddleDocs

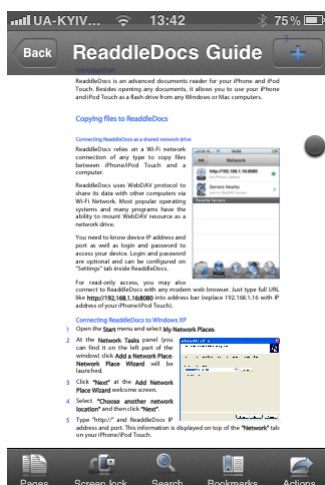
Reading documents on the go

You can view and manage all documents stored inside ReaddleDocs via **Documents** tab inside the application.







To start reading a document, tap its name. After file is loaded, you will see document reading screen.

NOTE: ReaddleDocs opens PDF documents with some controls that may be a bit different from those used for other documents.

Reading controls will remain on screen for two seconds. To show them again, use single tap anywhere on the screen.



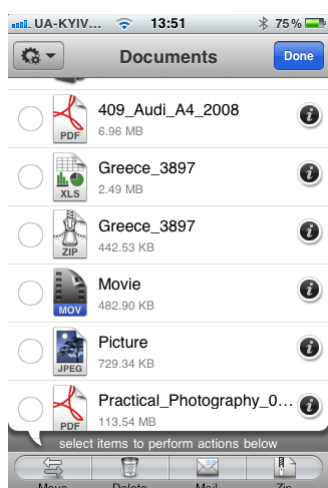
In PDF reading mode:

To	Do this
Zoom document	Use standard two-finger iPhone pinch gesture
Search within the document	Tap  . Search dialog pops to enter keyword
Navigate via PDF outline	Tap  . Navigate through outline structure, tap the title you need to jump to .
Open bookmark	Tap  and choose desired bookmark from the list.
Create bookmark	Tap the screen to show controls. Then tap  , enter bookmark name and tap Save
Email document	Tap  , then choose "Send by Email" option. The dialog pops to edit your message.
Jump to specific page	Tap  , then choose "Go to page" option. Navigation dialog will appear. Enter page number into edit box on top of the screen and tap Go. Double tap the screen to continue reading the document.
Fast scroll large documents	Tap the screen. Use the slider on the right part of the screen. Double tap the screen to continue reading the document.

When you rotate the device into landscape orientation, full screen mode will be turned on automatically.

To manage files stored inside ReaddleDocs:

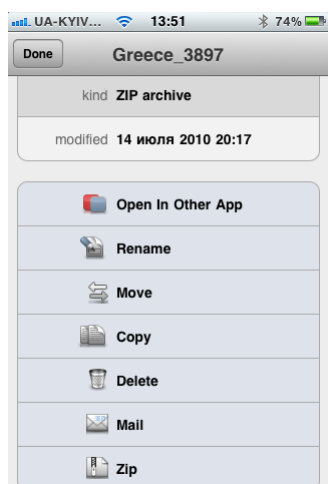
- 1 While you are viewing folder content on the **Documents** tab inside ReaddleDocs, tap **Edit** button in top right corner.
- 2 Mark files and folders you want to move or delete from your device and press appropriate button in the bottom of the screen. You can also create empty folder using "Add Folder" button.



NOTE: When you are deleting a folder, all its files and subfolders will be deleted as well.

To operate with particular file or folder

Tap disclosure indicator to open file details.



To	Do this
Rename document	Tap Rename, enter new name for the file or folder
Open document in other app (iOS4 only)	Tap Open in Other App, choose the program
Delete document	Tap Delete.
Email without opening	Tap Email. The dialog will pop up to edit message .
Compress file/folder	Tap Zip. Compressed files will be placed into the same folder.

Emailing documents that are stored inside ReaddleDocs

- 1 To email the document you are reading at the moment tap Actions button and choose "Send by Email". Mail dialog will pop up.

- 2 Enter your e-mail address to the "From" field. This is the address that your recipient will reply to.
- 3 Enter your recipient e-mail address. You can also fill this field with any contact from your address book.
- 4 Enter e-mail body text and tap Send.

Uploading documents from ReaddleDocs to iDisk or other storage

Files that are stored on iPhone/iPod Touch can be uploaded to MobileMe iDisk or other WebDAV storage directly from ReaddleDocs.

To upload files/folders to online storage, follow the steps below



1. From the «Online» tab and open its contents. Tap button in top right corner to open action menu
2. Navigate to the folder you choose your online storage want to upload files to. Tap «Upload» button in top right corner to upload.
3. Mark files and folders you want to store online. Then tap «Upload» button in top right corner to upload.

NOTE: File actions will not be shown for read-only storages.

Opening documents in other apps

iOS4 allows applications to open files in other applications. The most notable example is the ability to open attachments from the Mail application in ReaddleDocs.

To open a document in another application:

- 1 Open document you want to transfer in ReaddleDocs
- 2 Tap **Actions** button the toolbar and select **Open In...** from the list.

NOTE: **Open In** command creates a copy of the file you have in ReaddleDocs and copies it to another application. Thus if you want make any changes to that file be sure to copy it back to ReaddleDocs .

To transfer non-document files to another application:

- 1 Inside ReaddleDocs navigate to the folder with the file you want to open in another app
- 2 Tap **Edit** button in top right corner of the screen. Then tap disclosure indicator for a particular file. (black “i” icon).
- 3 Choose “Open In Other App” option from the dialog.

List of supported file formats

ReaddleDocs supports following document formats for viewing:

- Microsoft Office: Word, Excel, Powerpoint (.doc/.docx, .xls/.xlsx, .ppt/.pptx)
- Apple iWorks including iWorks '09: Pages, Numbers, Keynote (.pages, .keynote, .numbers).
- Portable document format (.PDF)
- Web pages (.html, .htm)
- Rich text documents (.rtf, rtf^{new})
- Text files (.txt)
- Fiction book (.fb2)
- Plucker e-books (.pdb)
- Images (.jpeg, .jpg, .gif, .png, .tiff)
- **NEW** Media formats (mp3, mp4, 3gp, mov, mpv)

NOTE: ReaddleDocs can also be used to store and carry files of any other type without opening them. This turns your iPhone/iPod Touch in a wireless flash drive

Settings

Settings allow you to customize your application, configure Wi-Fi network drive parameters, document viewing, security and other preferences for ReaddleDocs.

General

In this section you may configure parameters for emailing files directly from ReaddleDocs.

Mail From

- Set default From: email adress for emails sent from ReaddleDocs

Mail Signature

- Set default signature to be used for emails from ReaddleDocs

Viewing

Lock Portrait Mode

- Allows you to prevent screen rotation caused by iPhone/iPod Touch internal sensor.

Open after download

- When on, ReaddleDocs will open the document right after it was downloaded to your device. You may want to disable this preset to use ReaddleDocs for carrying unsupported file types without viewing them.

Open on relaunch

- Opens the document and scroll position you were reading last time.

Wi-Fi Network Drive

Wi-Fi Drive almost turns ReaddleDocs into portable flash drive. The only difference is that you need active Wi-Fi connection to transfer files from your computer to the iPhone or iPod Touch.

This feature is based on WebDAV protocol and is compatible with both Windows and Mac.

Enable Drive

- Turn WiFi access to your files on or off.

Ask For Password

- Enable or disable password protection for WiFi access to your files

Public Folder

- Enables public folder that can be accessed without password

NOTE: Password configured here is for Wi-Fi connections only. To protect your documents from being viewed directly on the iPhone, use **Passkey Lock** feature.

Passkey Lock

Passkey allows you to protect documents from being viewed by other person. Once set, the application will ask the passkey on each launch.

NOTE: To set password for wireless access to ReaddleDocs, use Wi-Fi Network Drive section.

ATTENTION! There is no way to recover your files if you forget the passkey.